

# ZOLAR

Technology & MFG

Connecting to Laser Dentistry

Photon Series

## DENTAL

### Diode Lasers



Zolar Technology & Mfg Co. Inc

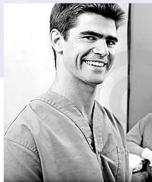
# Photon Series

Photon: 3 Watts • Photon Plus: 10 Watts



## Applications of Zolar Dental Diode Lasers (Photon Series)

- Exposure of Unerupted teeth
- Excision of lesion or removal of Granulation Tissue\*\*
- Fibroma Removal\*
- Frenectomy
- Gingival Troughing for crown impressions
- Gingivoplasty
- Hemostasis and coagulation
- Gingival incision and excision hemostasis
- Implant recovery
- Incision and drainage of abscess
- Leukoplakia
- Operculectomy
- Oral papillectomies
- Pulpotomy as an adjunct to root canal therapy
- Reduction of gingival hypertrophy
- Soft tissue crown lengthening
- Gingival bleeding index
- Excisional and incisional biopsies
- Treatment of canker sores, herpetic and aphthous ulcers of the oral mucosa
- Vestibuloplasty



Precise, safe and efficient surgical procedures on all oral soft tissues, including fibroma removal, frenectomies.

## Zolar Dental Diode Lasers (Photon Series) Usage in Periodontal Procedures

Sulcular debridement (removal of diseased or inflamed soft tissue in the periodontal pocket to improve clinical indices including: gingival index, probe depth, attachment loss and tooth mobility)

Debridement of diseased epithelial lining\*\*  
Removal of highly inflamed edematous tissue affected by bacteria penetration of the pocket lining and junctional epithelium\*



\* Photon  
\*\* Photon Plus

Photon: 3 Watts ● Photon Plus: 10 Watts

# Photon Photon+

## Technical Information

Wavelength: 810nm ( Photon 3W )  
Wavelength: 980nm ( Photon Plus 10W )  
Weight: <2kgs  
Dimensions: 187 x 148 x 38 mm

## Settings

Manual (Power, Time, Mode)  
Capability for 21 Treatment presets and 4 customized presets ( Photon 3W )  
Capability for 22 Treatment presets and 3 customized presets ( Photon Plus 10W )  
3 levels of aiming beam intensity

## Modes

Continous or Pulse Mode  
Pulse Interval: 0.01ms - 9.9s  
Pulse Duration: 0.01ms - 9.9s  
Duty Cycle: Adjustable  
Autoclave: Hand piece autoclavable

## Power Requirements

AC100-240V 50/60Hz  
Lithium battery 16.8V 10AH  
Wireless Pedal 1.5V Battery

## Complies with

IEC 60601-1  
IEC 60601-2-22  
UL 60601-1  
CAN/CSA C22.2 NO.601.1  
IEC 60825-1  
IEC 60601-1-2  
FCC Part 15C  
IC-RSS 210



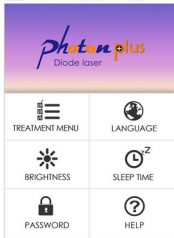
### EDITABLE PRESETS

Here you can enter your preferred settings for easy access.



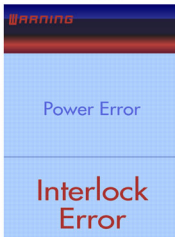
### MENU OPTION

Menu option screen



### HELP

Here you can get a guidance of operation

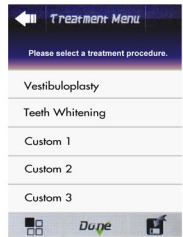


### WARNING

The system advises the operator of any malfunction by a message on the screen and a warning sound.

### PASSWORD PROTECTION

Photon uses digital password instead of a key for security purposes. After self-diagnostic routine, there appears password screen.



### CUSTOMIZABLE PROGRAMS

You can create / change your own procedure / new application

### ACCESSORIES



BUILT-IN TUTORIAL FEATURE



LARGE 3.5 INCH LCD DISPLAY



LONG LASTING BATTERY ( 3.5 to 4 HRS )



MULTILINGUAL INTERFACE



WIRELESS FOOT CONTROL with WIRED OPTION



### TOOTH WHITENING WITH PHOTON PLUS \*\*

- Laser assisted teeth whitening/bleaching
- Light activation for bleaching materials for teeth whitening.



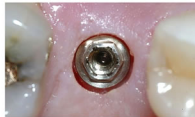
Gingival Troughing



Oral Papillectomies



Crown Lengthening



Implant Recovery



Herpetic Ulcer Treatment



Fibroma Removal

### Commonly known benefits of using laser therapy:

- Procedures with almost NO BLOOD CHEMISTRY
- Swelling...which you never feel or notice.
- Little to no tissue recession due to controlled thermal damage
- Gentle and comfortable - often requiring only mild topical anesthetic.
- Improved post-operative healing in all procedures.

\* Photon

\*\* Photon Plus



## ZOLAR LASERS

Zolar Technology & Manufacturing Co. Inc

Mississauga, ON Canada

Tel: 905.593.3605, 905.581.5235

Fax: 1 888.426.7728

[www.zolartek.com](http://www.zolartek.com)

[sales@zolartek.com](mailto:sales@zolartek.com)



Distributor / Dealer Address