

RxOnly



Contact Matrix System Instructions

- ▶ Superior separating force
- ▶ Inclined hoop angle allows easy stacking
- ▶ Converging tines prevent pop-off's
- ▶ Large diameter for ease of access
- ▶ Autoclavable

Product Description

MEGA V represents the innovation behind the converging tines technology and the superior clinical performance only a sectional matrix system can provide. The use of heat-treated stainless steel, ensures the intended force is delivered to separate the adjacent tooth, freeing the clinician to perform class II restorations, quickly and efficiently.

Indications for Use

The MEGA V sectional matrix system offers a single ring size intended for molars and premolars, which can be stacked to achieve multiple restorations at one time.

Precautions

- For safety, isolate the area with a rubber dam.
- If overspread, the rings may splay. Splay may be corrected by crimping the ring with pliers.
- Rings can be autoclaved at 132°C for 15 minutes. Let cool before using.
- Rings may discolor after autoclaving cycles. This does not affect the quality or function of the ring or tines.
- Matrices are single use only and should be discarded.



1 Select and place matrix and wedge.
Two sizes of matrices are provided.

Note: To open a tight contact, the ring may be placed a few minutes in advance, removed and then the matrix and ring can be placed as usual.



2 Expand and place Mega V using
Danville's Ring pliers or rubber dam
forceps.

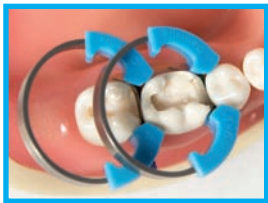


3 Place tines against the matrix and “V” directly over the wedge.



4 Finish your class II restoration.

FEATURES:



Rings can easily be stacked for multiple restorations.



Rings can be placed in opposite directions.

REFILLS & ACCESSORIES

RINGS & MATRICES









Mega V	2pk	94269
Stiff Matrix/Large	100pk	90071
Stiff Matrix/Small	100pk	90070
Thin Matrix/Large	100pk	89434
Thin Matrix/Small	100pk	89432
Ultra Thin Matrix/Large	100pk	91074
Ultra Thin Matrix/Small	100pk	91139
Subgingival Matrix	50pk	90679

PLIERS, FORCEPS & WEDGES

Wedge/Ring Pliers		91298
<small>(Optimized for Mega V Rings and ContactWedges)</small>		
Mega Grip Matrix Forceps		90486
Mega Wedge		
Refill Small	100/pk	94806
Refill Medium	100/pk	94808
Refill Large	100/pk	94810

DEFINITIONS OF SYMBOLS

The following symbols may appear on the product packaging or labeling.

Symbol	Definition	Symbol	Definition
	Reference number		Lot number
	Use by		Manufacturer
RxOnly	Caution: Federal law restricts this device to sale by or on the order of a dentist.		European Community Authorized Representative
	European Mark of Conformity		Consult instructions for use
	Do not reuse		



Danville Materials
a Zest Anchors, LLC company
2875 Loker Avenue East
Carlsbad, CA 92010 USA
(1)760-743-7744

www.zestdent.com

ZD **ZEST DENTAL**
SOLUTIONS™



MDSS GmbH
Schiffgraben 41
30175 Hannover
Germany

