

Contract Matrix™

Sectional Matrix System

- Restores natural contour
- Ideal contacts
- Minimizes finishing
- Retentive Tines
- Flat Tines.
- Contoured stainless steel
- Matrices
- Occlusal offset
- Stackable



CONTACT MATRIX IS THE ULTIMATE MATRIX SYSTEM,
WITH THREE IMPROVEMENTS OVER **ANY OTHER** MATRIX SYSTEM.

CONTACT RINGS FEATURE:

1. Converging tines to make the rings far more retentive than parallel tines.
2. Inward and outward tines for placement on either side of the cavity preparation.
3. Occlusal offset to allow stacking and also clearance over obstacles like rubber dam clamps.

Contact Matrix are contoured stainless steel to insure perfect contact and reproduce natural contour. Contact Matrices are provided in small and large sizes as well as soft and stiff thicknesses.

TRIAL KIT ----- 90066

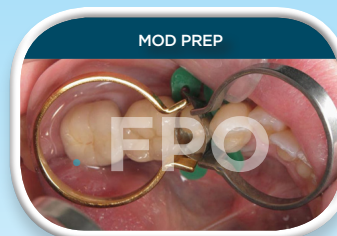
- 2 Rings (1 inward & 1 outward)
- Lite Flex Matrices 50 Small/50 Large

CLINICAL KIT ----- 89388

- 6 Rings (3 inward & 3 outward)
- Lite Flex Matrices 100 Small/100 Large
- 89477 Rev A

CLINICAL KIT PLUS (SHOWN ABOVE) ----- 89439

- Clinical Kit, Ring Pliers & Matrix Forceps
- Ring Pliers Plus 90777
- MegaGrip Forceps 90486
- Ring and Matrix refills also available



*Garrison is a trademark of the Garrison Dental Supply Co.