

CEMEZ™
WITH INTELLITEK™ TECHNOLOGY

One cement to rule them all.



High Bond
Strength

Microleakage
Protection

Easy
to Use

Optimal
Esthetics

IntelliTek™ Technology

**ZD ZEST DENTAL
SOLUTIONS®**

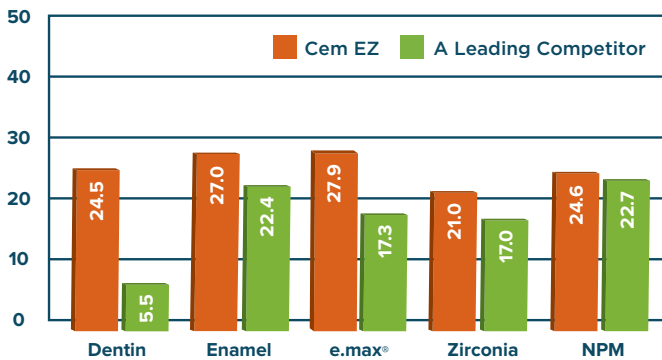
ZEST | DANVILLE MATERIALS | PERIOSCOPY

Supreme strength to stand the test of time.

Introducing Cem EZ™ adhesive resin cement with our innovative, patent-pending IntelliTek™ Technology. Cem EZ provides the ideal combination of exceptional bond strength, and with IntelliTek Technology, delivers long-term color stability, and universal compatibility with modern, more acidic adhesive systems.



Shear Bond Strength (MPa)¹



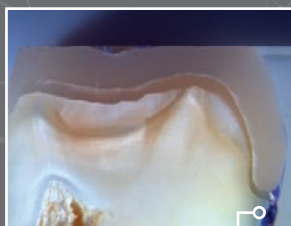
¹Data on File: Zest Dental Solutions

Cem EZ is formulated to provide excellent adhesion to the enamel and dentin tooth structure, along with a wide variety of restorative materials including ceramics and metals, ensuring confidence in the longevity of indirect restorative procedures.

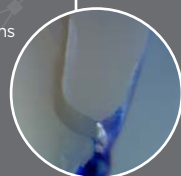
Cem EZ Provides Excellent Protection Against Microleakage.

Internal microleakage research demonstrated excellent results under routine thermocycling, with no dye penetration on samples using bonded lithium disilicate to extracted teeth.

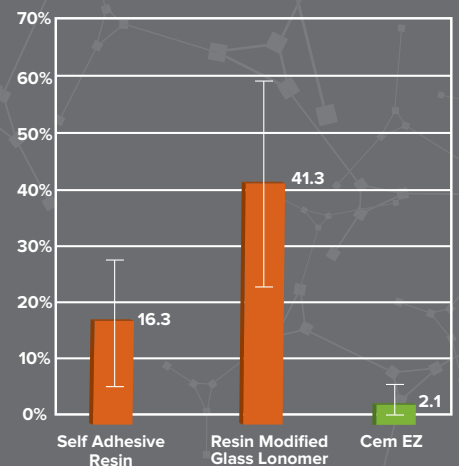
This level of performance was also evident in a study conducted at the University of Alabama, where on average Cem EZ exhibited less microleakage than the other cements tested.



Data on File:
Zest Dental Solutions



Microleakage Results²

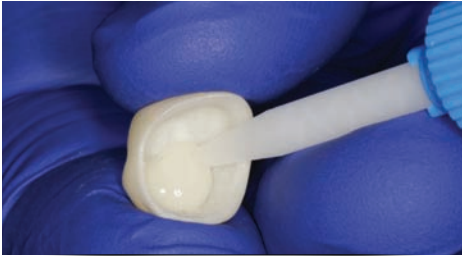


²Study Conducted By Nathaniel C Lawson, D.M.D Ph.D
University of Alabama

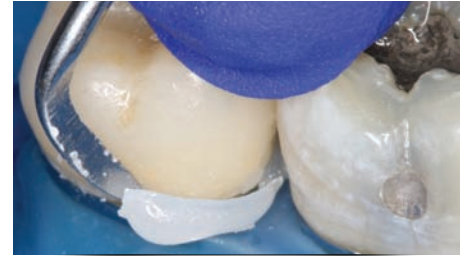
Data on File: Zest Dental Solutions

EZ Procedure, EZ Clean Up.

Some leading cement systems require multiple bottles and primers to complete the procedure. Cem EZ™ was designed with efficiency in mind. For example, zirconia placement requires only one liquid (Prelude One™), and the cement shade of choice - it's that simple!



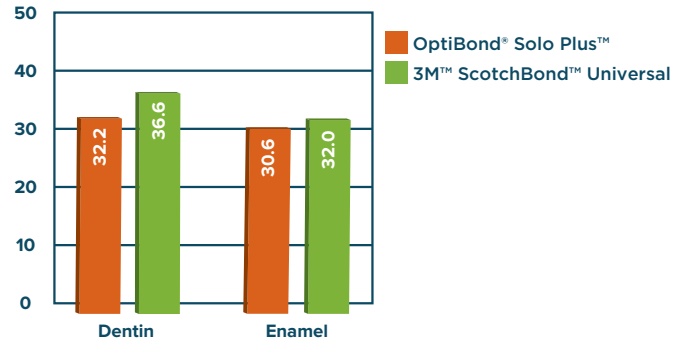
Through collaboration with everyday dentists, our chemists developed an ideal working viscosity for placement of crowns, inlays and onlays, as well as posts. In addition, with a simple tack cure, clean-up is quick and effortless.



Optimum Flexibility, Complete Confidence.

Prelude One is your next generation adhesive; with only one liquid, you can choose self-etch, total-etch, or selective-etch techniques. If other bonding agents are preferred, Cem EZ with IntelliTek™ provides complete confidence with widespread adhesive compatibility.

Widespread Adhesive Compatibility (MPa)³

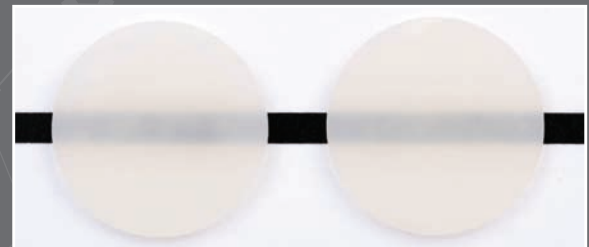


³Data on File: Zest Dental Solutions

Great Esthetics At a Great Value.

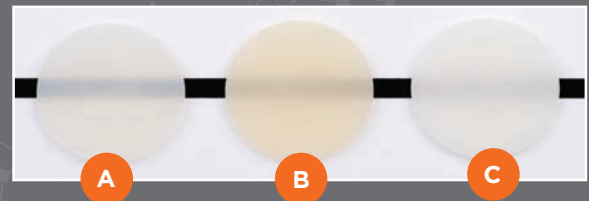
Cem EZ provides the same level of esthetics found in many of the leading adhesive resin cements, without having to pay a premium. IntelliTek Technology ensures restorations will remain color stable over time.

Cem EZ is available in three shades: Translucent (A), Warm (B), and White Opaque (C).



Cem EZ Translucent shade after accelerated aging 8 wks @ 50°C H₂O = 1 year at room temperature

Data on File: Zest Dental Solutions



Cem EZ Shades



Ordering Information



Cem EZ™ Starter Kit

90-00010 Three 5 gm Syringes - Translucent, White Opaque, Warm, 24 Automix Tips, Sure Etch™ Gel 5 ml, 12 Etch Tips, Prelude One™ 5 ml, S-Bond™ 5 ml, 40 Applicator Brushes, One Mixing Well

Cem EZ Refill Kits



90-00011 Translucent (Two 5 gm Syringes, 16 Automix Tips)

90-00012 Warm (Two 5 gm Syringes, 16 Automix Tips)

90-00013 White Opaque (Two 5 gm Syringes, 16 Automix Tips)

Automix Tips



90-00025 Cement Automix Tips (24 per pack)



91686 Automix with Intraoral Tips (12 per pack)

91430 Automix with Intraoral Tips (48 per pack)

Our Proprietary IntelliTek™ Technology is also inside the latest generation of Bulk Fill Composites – Bulk EZ™. Try it today and experience unlimited depth of cure and excellent microleakage protection with your Class I or II restorations!

