

Accolade™ PV

Veneer Placement System

Accolade PV

is a complete veneer application system designed by a major lecturer & clinician*. Six shades included in the kit satisfy 95% of situations. Accolade is highly thixotropic so it adapts readily but does not slump. Excellent polish and wear resistance. Now with natural fluorescence and 0.7u filler.

Revolutionary PV Try-In Pastes

are ultra slow set composites, eliminating the need for full removal. PV Try-In Pastes provide a highly accurate shade. The paste gets brushed off and the Accolade PV Composite can be directly applied. Conventional water or glycerin based pastes are not true to color and are a source of contamination and bond failure.

- Revolutionary Try-In Composite
- Developed by leading clinician
- Complete Kit with adhesive, silane & composite



PV Composite Refills		Cement Posts and Restoration	
Translucent 5gm	90560	Translucent 5gm	91233
Light 3gm	90561	Light 3gm	91234
Extra Light 3gm	90559	Extra Light 3gm	91235
White Opaquer 3gm	90562	White Opaquer 3gm	91236
Brown 3gm	91231	Brown 3gm	91237
Yellow 3gm	91232	Yellow 3gm	91238

VENEER KIT

Accolade PV Composite:

Translucent 5gms, Light 3gms, Extra Light 3gms, White Opaquer 3gms, Brown 3gms, & Yellow 3gms.

Accolade Try-in Pastes:

Translucent 5gms, Light 3gms, Extra Light 3gms, White Opaquer 3gms, Brown 3gms, & Yellow 3gms.

Prelude SE bonding system:

Prelude Adhesive.

SureEtch Gel:

37% phosphoric etchant.

S-Bond:

prehydrolyzed silane yields bond strength with superior stability.



BEFORE VENEER



PREP



TRY-IN



COMPLETED VENEERS

Accolade™ PV Technique



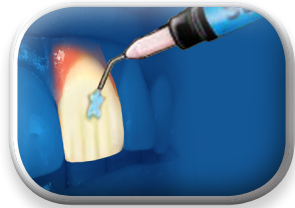
1 Apply S-Bond to inside of veneer and dry with air stream.



2 Load veneer with Try-In Composite Paste and press into place. Evaluate color.
Caution: Do not use any bonding agents prior to Try-In Composite Paste.



3 If a shade change is desired, the Try-In Composite Paste may be removed with a brush and replaced with another shade. When shade is satisfactory, brush off most of the Try-In Composite Paste.



4 Clean teeth with pumice and water. Dry with air stream. Etch tooth surface for 10 seconds using SureEtch. Rinse well with water.



5 Dab tooth with dry MicroBrush or cotton roll to remove surface wetness. Scrub Prelude Adhesive onto tooth surface then onto veneer surface, for 10 seconds each.



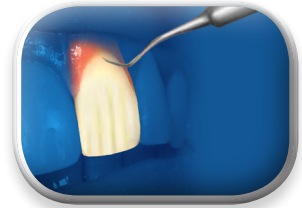
6 Air thin Adhesive on tooth and veneer. Do not light cure.



7 Load veneer with Accolade PV Composite and place on tooth. Residual Try-In Composite Paste will polymerize with Accolade PV Composite.



8 Tack veneer center with 5 second light-cure using a small diameter tip. Using a large diameter tip, wave light over margins long enough to gel Accolade PV.



9 Remove excess Accolade PV gel with explorer. Insert tofflemine strips on both sides of veneer.



10 Cure all surfaces for 40 seconds and polish margins using a FlashBuster where necessary. Abrasive strips are used on interproximal surfaces.