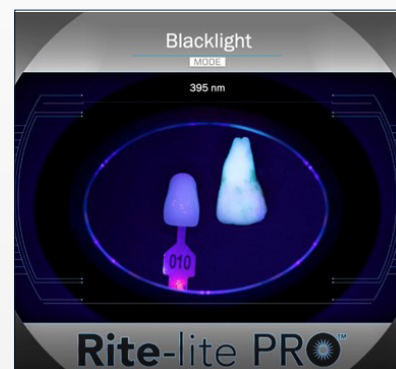
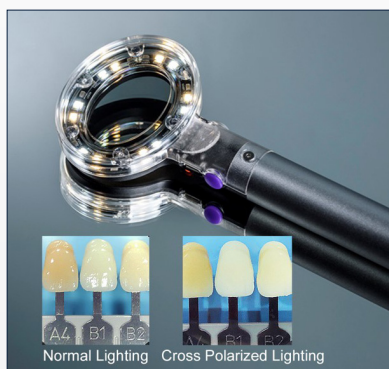


Rite-lite PROTM

MULTISPECTRAL/HI CRI SHADE LIGHT



43 Miry Brook Road • Danbury, CT 06810 • (203) 778-0200

ISO 9001 CERTIFIED & 13485 COMPLIANT | ALL PRODUCTS ARE FDA CLEARED



Advancing Dental
Excellence

Made in the USA | www.addent.com

RITE-LITE PRO MULTISPECTRAL/HIGH CRI SHADE LIGHT

Rite-Lite PRO Shade Matching Unit with HIGH-CRI LED's which recreate the visual spectrum produced by natural sunlight. The Rite-Lite PRO Shade Matching Light is a device that incorporates diffused L.E.D. technology to simulate various lighting conditions to aid in the matching of teeth and all types of dental restorations. It is used by both dental professionals and dental ceramists.

FEATURES

- Three modes of visible light for shade taking to simulate varying lighting conditions found in indoor and outdoor environments
- Visible light spectra produced with Hi CRI LED's
- Three selectable intensity levels for visible spectra modes
- Black Light mode for examining restoration fluorescence
- Accessory cross polarizing filter attachment to permit observation of tooth characterization without surface reflection
- Regulated Output: Rite-Lite PRO features a voltage regulator
- Rechargeable Li-Ion battery
- Five minute auto shutoff feature conserves battery power
- USB power supply for charging unit
- LED Battery charge and battery status indicator

BENEFITS

- Shade matching under multiple lighting conditions insures a better shade match
- Recreate the visual spectrum produced by natural sunlight
- Better visualization and control of glare
- Match restoration to natural tooth fluorescence
- Reduces glare and reflective highlights to visualize natural anatomic defects
- Ensures consistent light output over the useful battery life
- Lasts for approximately 5 years with normal use
- Prolongs battery life
- Reduces operation cost
- Indicates when to recharge unit

RITE-LITE PRO OFFERS THREE MODES OF LIGHT FOR SHADE TAKING:

1. Color-corrected light at a color temperature of 5500° Kelvin.
2. Incandescent – room light at 3200° Kelvin. This is found in many indoor environments.
3. Ambient light at 3900° Kelvin. This is a combination of room light and daylight.

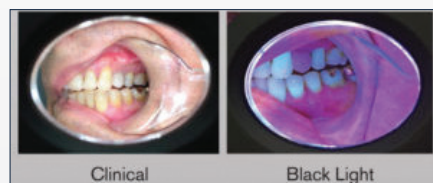
Rite-Lite PRO offers three levels of light intensity for better visualization.

Black Light setting for matching restorations to natural dentition fluorescence.

TO USE:

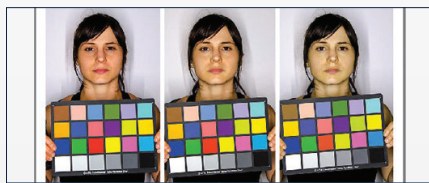
Choose shade at 5500°K. Verify the selected shade using 3200°K (incandescence) and 3900°K (ambient). Shade should match in all color temperatures.

The Rite-Lite PRO is powered by 24 L.E.D.'s (including black light LED's), rechargeable battery and has a voltage regulator. A pad of 25 neutral color tabs is included and are used to standardize the background while shade taking.



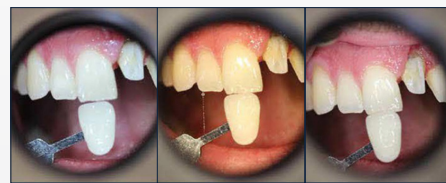
RESTORATION VIEWED WITH FLUORESCENCE MODE

Research shows that natural teeth fluoresce at wavelengths below 400 nm, i.e.- black light. Wavelengths below 400 nm are part of the spectrum of various indoor and outdoor lighting environments. Therefore, if we are to get a perfect shade match for porcelain or composite materials, they should fluoresce in the same manner as natural teeth. The cell phone photos show the effect of this mismatch when viewed with the Rite-Lite PRO.



HIGH COLOR RENDITION INDEX (CRI) FOR COLOR ACCURACY

The Rite-Lite High CRI LED's recreate the visual spectrum produced by natural sunlight. CRI is a measure of how accurately an LED light source or any artificial light source reveals an object's true colors. The higher the CRI, the better the artificial light source is at rendering colors accurately.



Daylight Room Light Ambient Light

RITE-LITE PRO WITH POLARIZING FILTER

- Eliminates Reflection
- Provides enhanced visualization of tooth for color, depth and transparencies
- Enhances the visualization of internal details and individual characterization

Follow us on social media:



info@addent.com



Addent
INCORPORATED

Advancing Dental
Excellence

ISO 9001 CERTIFIED & 13485 COMPLIANT | ALL PRODUCTS ARE FDA CLEARED



Made in the USA | www.addent.com