

Compex HD™



Quick Start Guide (Heated Dispenser)

INTENDED USE:

The Compex HD unit is intended to be used by a dentist or health care provider to warm and dispense dental composite materials contained in a compule or PLT (Pre-Loaded Tip) to 155 °F (68 °C).

PRECAUTIONS:



Not Sterile – refer to cleaning and disinfecting section. Refer to the instruction manual for all CAUTIONS PRIOR TO USE.



OPERATION:

Prior to the first use, plug the power supply into a suitable outlet and insert the USB connector into the jack located on the bottom of the handle. The power supply works from wall voltages from 100 to 240 Volts AC. It provides an output of 5 Volts DC. Allow the unit to fully charge prior to the first use.



The Compex HCD control circuit does not allow the unit to function with the power supply connected, so it cannot be used for patient application.



Blinks RED when unit is charging



Turns GREEN when battery is completely charged



Turns AMBER when battery is low



When battery is near end of charge, indicator turns RED

LED BATTERY INDICATOR FUNCTION

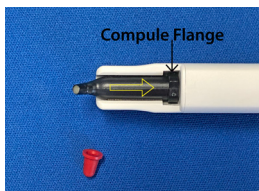
- CHARGING THE UNIT

- When the power supply is connected, and external power is applied the right battery indicator LED blinks RED while the unit is charging.
- When the battery is completely charged, the RED battery indicator LED stops blinking and turns solid GREEN.

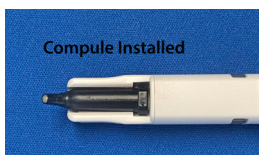
LED BATTERY INDICATOR FUNCTION

- OPERATING THE UNIT (CHARGER DISCONNECTED)

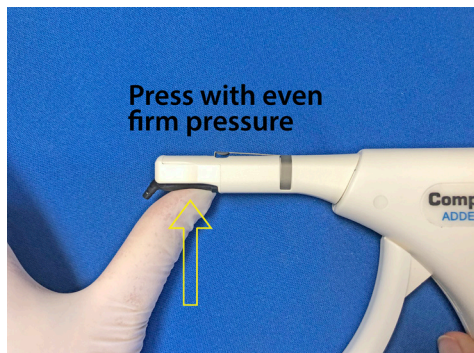
- When the battery is charged, and the power switch is depressed the right-side battery indicator LED is GREEN.
- When the battery power drops by approx. 80%, the right-side battery indicator LED turns AMBER. This should allow for 5 - 15 minutes of use.
- When the battery is nearing end of useful charge, the right-side battery indicator LED turns RED.



Compule Flange



Compule Installed



Press with even firm pressure

INSTALLING THE COMPULE (PLT)

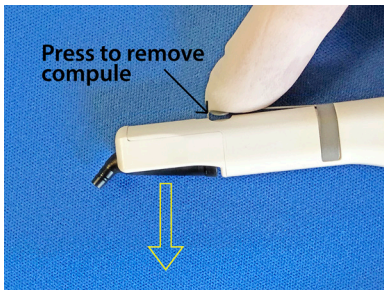
1. Place the compule into the opening in the barrel ensuring that the compule flange is positioned as far back as possible.
2. Press the compule into the heating element with firm even pressure. The compule will snap into place.
3. Ensure that the compule body is fully seated against the heating element with the compule flange as far back as possible.



For the first minute of heating cycle, the temperature status blinks AMBER



At one minute the temperature status blinks GREEN and at 2 minutes turns solid GREEN



Press down on compule ejector to remove the used compule

ACTIVATION/DEACTIVATION/COMPULE

- The heating cycle warms the composite to 155°F (68°C): Pressing the on/off button once activates the heating cycle. For the first minute of the heating cycle the temperature status LED blinks AMBER. At one minute the LED starts blinking GREEN. At two minutes the LED turns solid GREEN. The LED stays solid GREEN for the remaining eight minutes of the heating cycle.

Heating one compule:

1. Install a compule and press the on/off button once.
2. Allow the compule to heat for two minutes. At two minutes the temperature status LED will turn solid GREEN and the composite is warm and ready to express.

Removing the compule:



Caution. Some compules can forcefully eject during the removal process. Be sure to hold your hand below the compule to catch it when it comes out.

- To remove the compule, press down on the raised portion of the compule ejector as shown. This feature allows the rear of most compules to tilt down for easy removal.

Heating additional compules:

3. Do not turn the Compex unit off.
4. Remove the first compule.
5. **Install a new compule and immediately turn the unit off and then back on.**
6. Allow the compule to heat for one minute. At one minute the temperature status LED will turn from blinking AMBER to blinking GREEN and the composite is warm and ready to express.
7. Additional compules can be heated by repeating steps 3 through 6.

Optional: Save time by pre-heating additional compules using the AdDent Calset Composite Warmer.

1. Set the Calset Composite Warmer on the high temperature setting 155°F (68°C) and allow it to reach operating temperature (20 minutes for small trays, 30 minutes for large trays).
2. Place the desired number of compules in the Calset Tray and allow sufficient heating time, approximately three minutes.
3. **Do not turn the Compex unit off.**
4. Remove the first compule.
5. Install a pre-heated compule in the Compex. **The composite is ready to express immediately.**
6. Additional compules can be heated by repeating steps 3 through 5.

Note

- Once the heating cycle has been activated, pressing the on/off button again will shut off the unit and switch it back into sleep mode.
- The auto shut off feature takes place after 10 minutes of ON time to conserve battery power.



BARRIER PROTECTION

- Self Sealing Barrier Protection bags have been supplied to seal the entire Compex HD device.
- An autoclavable sleeve has been supplied for cross contamination protection.