



Product Introduction



- Dual cure bulk fill introduced in 2016
- Uses patented Intellitek initiator system, overcoming a variety of clinical and technological challenges
- Uses 0.7 micron barium glass filler, offering great esthetics, polishability, and wear resistance
- Became an immediate hit that continues to grow ~30% every year



CLASS I
PREPARED CAVITY



CLASS I
DIRECT RESTORATION WITH BULKEZ



- **Simple**

- Unlimited depth of cure means one-step placement up to occlusion - no capping or layering!
- No dual-cure primers or activators, works with any bonding agent

- **Fast**

- Self-cures in 90 seconds, up 60% reduction in chairtime vs. incremental layering

- **Efficacious**

- Cures towards the base and bonded surfaces, eliminating sensitivity and microleakage



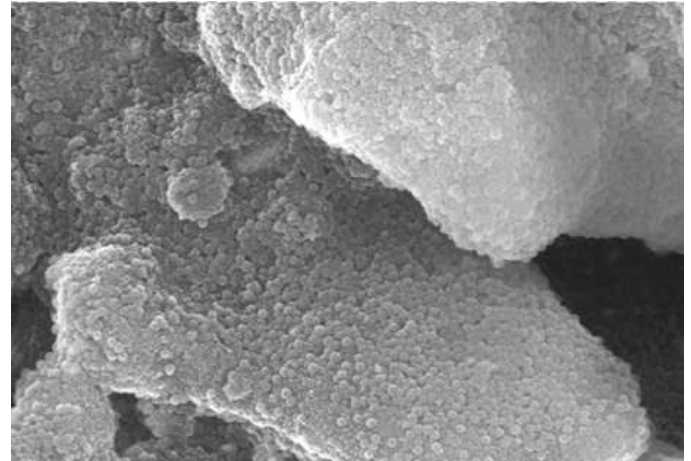


Observations from the industry

- Some very respected clinician's realize it is a great material for more than just Class I's and II's
- Core filler technologies in the market continue to advance - nano fillers are the state of the art
- Growing expectations around wear resistance, esthetics, shade matching, handling, and other physical properties
- Some doctors continue to cap despite not needing to

bulkeZPLUS[®] New & Improved

- At the core of Bulk EZ PLUS is a high quality 80 nm spherical zirconia filler
- Adds shade matching ability, improved polish, and enhanced wear resistance
- Rheology and thixotropics finely honed for optimal flow and stackability
- Additional shades - BL/OP, C1/C2, Core White
- Fully indicated for a wider range of clinical applications
- All the benefits and physical strength of the original!



Bulk EZ PLUS 80nm spherical fillers at 20,000X magnification



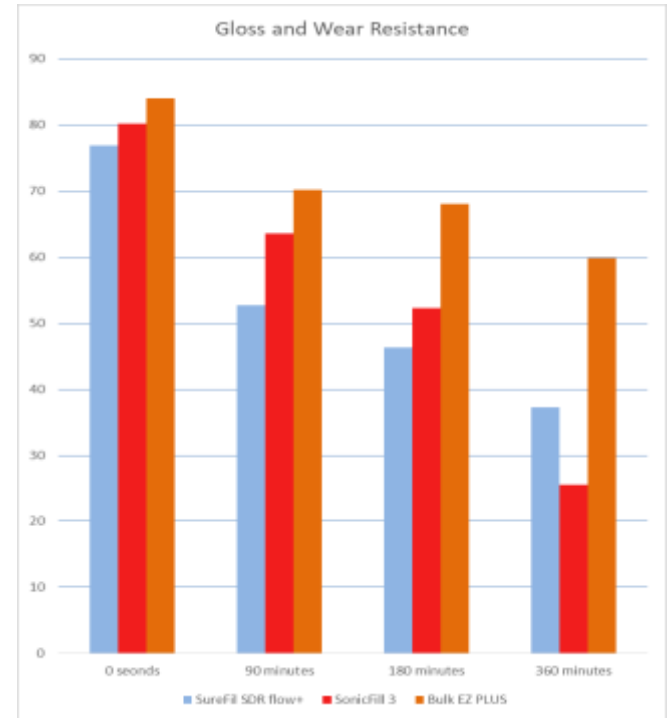
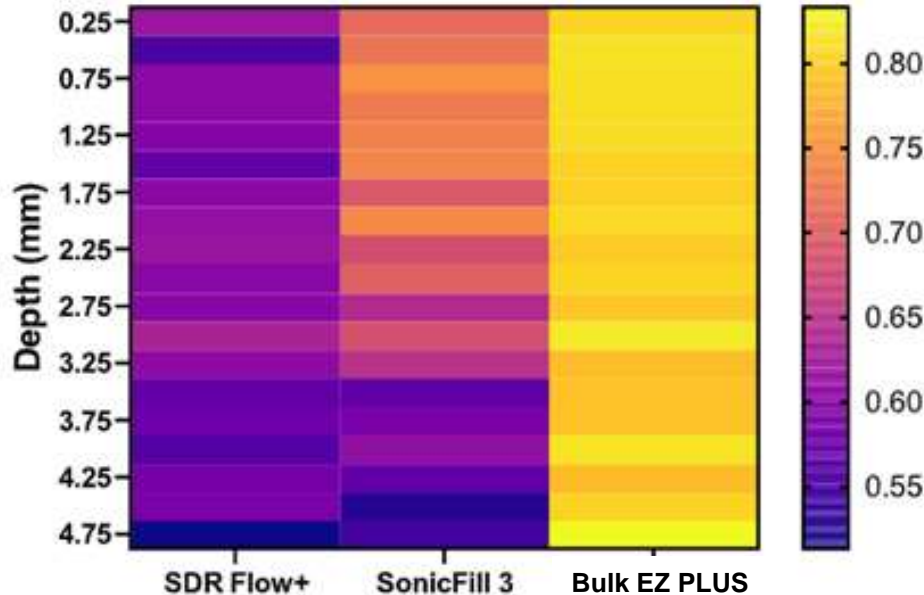
- Unlimited depth of cure
- Market leading physical properties
- Higher opacity than other bulk fills
- 0.7 micron barium glass
- Class I and II restorations
- Good esthetics, polish retention, and wear resistance



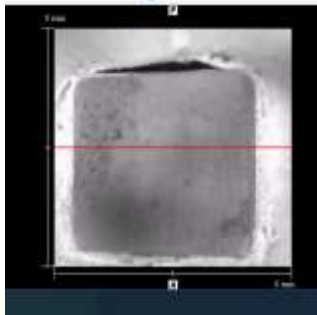
- Unlimited depth of cure
- Market leading physical properties
- Higher opacity than other bulk fills
- + 80 nm spherical zirconia
- + Class I - VI restorations
- + Core build up, crown fabrication, post cementation
- + EXCELLENT esthetics, polish retention, and wear resistance
- + Capping totally unneeded
- + Easier finishing and polishing

Evaluation of Various Properties of "Bulk EZ Prototype", Oregon Health & Science University
 Dr. Jack Ferracane

Conversion Map

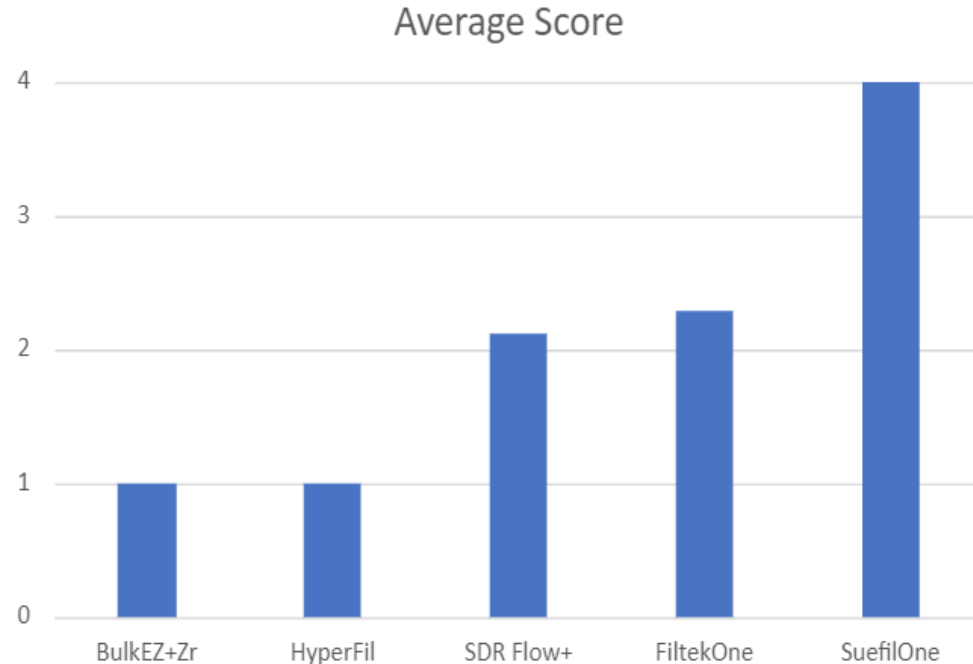


Cavity Adaptation and of Bulk fill Composites, University of Washington School of Dentistry
OCT Analysis of Gap Formation – Dr. Alireza Sadr



Surefil One

- Score 1 = no or less than 10% of cavity floor separation
- Score 2 = 10 – 50% separation
- Score 3 = 50 – 90% separation
- Score 4 = >90% separation





“Significant upgrade to Bulk EZ. Keeps all of the industry leading characteristics of EZ, (margins, directed shrinkage, unlimited cure, color) while improving polishability, shine & hardness.” - Dr. Mike Nelson a.k.a. Dr. Bulk EZ

Courtesy of Dr. Mike Nelson





A complex case made EZ!
Courtesy of Dr. Mike Nelson



"I am not a regular user of bulk fill composites based on % shrinkage issues. However I am very impressed w/ Bulk EZ PLUS, especially for core build ups. Very stackable + preps well. For posterior restorations it handled well also." - Dr. Allan Mohr



Courtesy of Dr. Allan Mohr



“Great product. Handles differently than original Bulk EZ.” - Dr. Troy Schmedding

- Better stackability and thixotropics, thinks this is a good thing for many doctors and expanded indications



“I see this material as the much needed replacement for Bulk EZ based on its resistance to wear. It’s also important to achieve a better gloss and gloss retention.” - Dr. Patrick Roetzer



“The opaque white shade is exactly what I was looking for. Plus version provides great stacking ability vs. the original Bulk EZ. I like that it’s a bit thicker than original Bulk EZ. Will definitely purchase this product. Love it.” - Dr. Tyler Rump

“I wanted to try this material because of its strength for non traditional uses for long term provisionalization or as a permanent restorative material for full mouth rehabilitation using an injection mold technique. Multiple properties lead me to trying this material. Dual cure is beneficial bc the curing light must be used from a farther distance and from outside of the clear matrix.” - Dr. Megan Shelton



bulkeZPLUS®

Launch



Launches June 1st, 2022!
US, EU, Australia