

# TOKUYAMA® BOND FORCE

Single Component, Self-Etching, Light-Cured Dental Adhesive

Tokuyama® Bond Force is a 7th generation single component, self-etching, fluoride releasing bonding agent. With the patented SR monomer, Tokuyama® Bond Force creates a 3-D link to the tooth generating an extremely strong bond to enamel and dentin. Tokuyama® Bond Force requires only 1 application, and is designed to be used on both cut/uncut enamel and dentin. Tokuyama® Bond Force is available in bottle or unit dose.



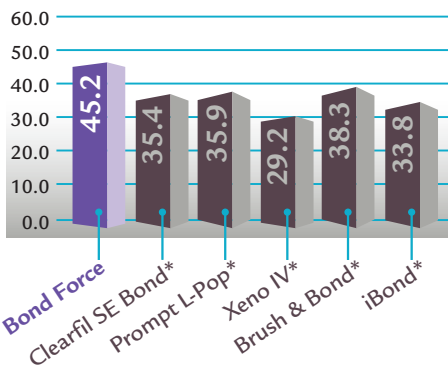
## Benefits

- Outstanding bond strength
- Designed for cut/uncut enamel and dentin
- Only 1 application required
- No etching, No rinsing
- No mixing
- Fluoride releasing
- Thin film thickness
- Less technique sensitive
- Available in both bottle and unit dose

## Indications

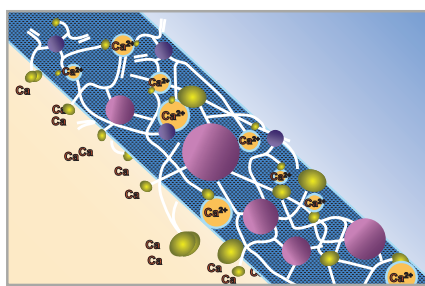
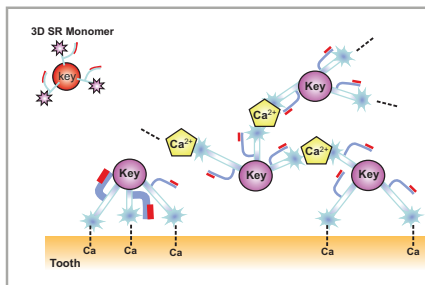
- Bonding of light or dual cured composite material to:
  - cut/uncut enamel and dentin
  - fractured porcelain/ composite repair

Microtensile Bond Strength (MPa) to Dentin\*\*



\*\* Courtesy of Dr. Rick Walter, Chapel Hill, North Carolina  
 \* Not a registered Trademark of Tokuyama Dental Corp.

## 3D Self-Reinforcing Technology



# TOKUYAMA® BOND FORCE

Single Component, Self-Etching, Light-Cured Dental Adhesive

## Product Packages Available

### Tokuyama® Bond Force Intro Kit

- Unit Dose/20 x 0.1mL
- Disposable Applicator (Superfine)/25



### Tokuyama® Bond Force Standard Kit (Unit Dose)

- Unit Dose/50 x 0.1mL
- Disposable Applicator (Superfine)/50



### Tokuyama® Bond Force Kit

- Bottle/5mL
- Disposable Brush/50
- Dispensing Well



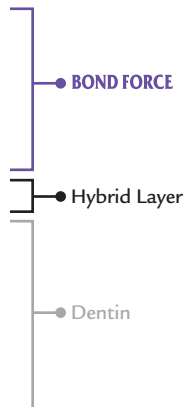
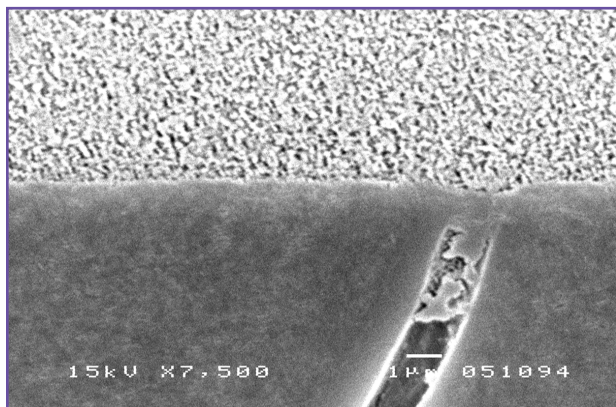
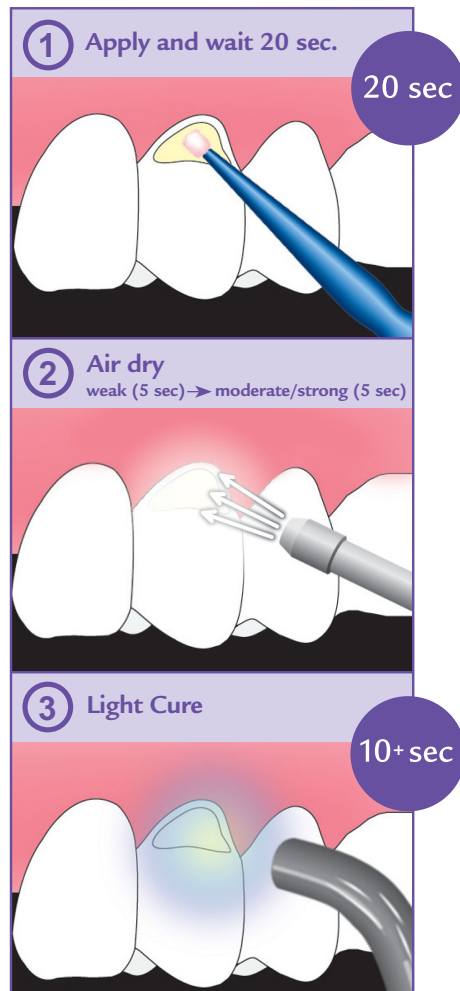
### Tokuyama® Bond Force Refill

- 5mL Bottle

## TOKUYAMA® BOND FORCE PRODUCTS

ITEM#	ITEM DESCRIPTION
14961	Tokuyama® Bond Force Intro Kit (Unit Dose)
14951	Tokuyama® Bond Force Standard Kit (Unit Dose)
14912	Tokuyama® Bond Force Kit
14932	Tokuyama® Bond Force Refill

## Procedural Steps



Resin-dentin Interface

For more information, please call 1.877.ESTELITE or visit [www.tokuyama-us.com](http://www.tokuyama-us.com)

